

HSF

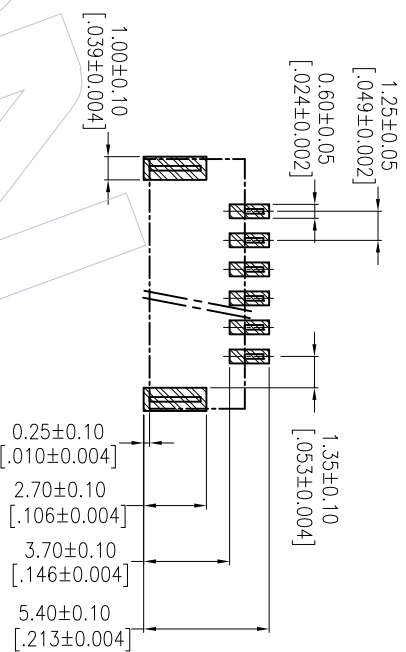
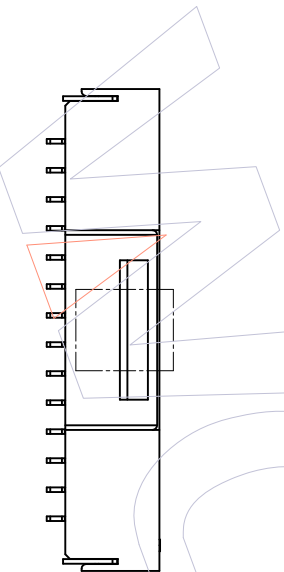
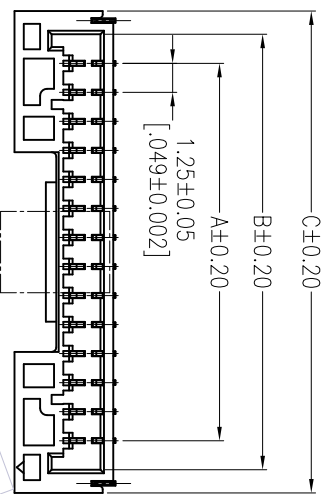
NOTES:

- Current Rating: 1.0A AMP
- Contact Resistance: 30millionhm Max
- Withstand Voltage: 500V AC/Minute
- Insulation Resistance: 100Megohtm Min
- Operation Temperature: -25°C to +85°C
- Housing Material: PA9T(UL94V-0)
- Contact Material: Phosphor bronze
- Contact plating: Sn over Ni Plating

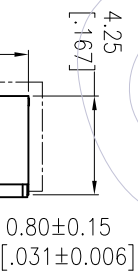
Ordering Information

WF1256A- WZ XX ER 1

Terminal shape: NO. of Pins : Packing:
 WZ: Wafer 90° SMT 2P-15P R=Tape&Reel



Recommended P.C.B Layout(Top Side)
 (PCB BOARD TOLERANCE±0.05)



Circuits	Part No.	Dimensions		
		A	B	C
2	WF1256A-WZ02ER1	1.25[.049]	3.75[.148]	5.75[.226]
3	WF1256A-WZ03ER1	2.50[.098]	5.00[.197]	7.00[.276]
4	WF1256A-WZ04ER1	3.75[.148]	6.25[.246]	8.25[.325]
5	WF1256A-WZ05ER1	5.00[.197]	7.50[.295]	9.50[.374]
6	WF1256A-WZ06ER1	6.25[.246]	8.75[.344]	10.75[.423]
7	WF1256A-WZ07ER1	7.50[.295]	10.00[.394]	12.00[.472]
8	WF1256A-WZ08ER1	8.75[.344]	11.25[.443]	13.25[.522]
9	WF1256A-WZ09ER1	10.00[.394]	12.50[.492]	14.50[.571]
10	WF1256A-WZ10ER1	11.25[.443]	13.75[.541]	15.75[.620]
11	WF1256A-WZ11ER1	12.50[.492]	15.00[.591]	17.00[.669]
12	WF1256A-WZ12ER1	13.75[.541]	16.25[.640]	18.25[.719]
13	WF1256A-WZ13ER1	15.00[.591]	17.50[.689]	19.50[.768]
14	WF1256A-WZ14ER1	16.25[.640]	18.75[.738]	20.75[.817]
15	WF1256A-WZ15ER1	17.50[.689]	20.00[.787]	22.00[.866]

OPERATION	DRAW	DATE	SCALE	FIT	PART NO.
X.X	JYhuang	2013/06/04	UNIT	mm	WF1256A-WZXXER1
X.XX	CHECK	DATE	SIZE	A4	TITLE:
X.XXX	±0.15		SHEET	1/1	"J" TYPE 1.25 Wafer 90度SMT+CAP
Angle	± 3'	APPROVE	PROJ.		Customer NO.
DIM	TOL	DATE			
CHANGE					
REV	DATE	MODIFICATION DESCRIPTION			
A0	2013/06/04	NEW			
1					

WCON

WCON-Dongguan
 WCON-Kunshan
 Http: www.wcon.com
 Tel: +86 769 85358920
 Fax: +86 769 85358915
 E-mail: sales@wcon.com

WCON-Kunshan
 Tel: +86 512 57468408
 Fax: +86 512 57468468
 E-mail: sales@wcon.com